

LARGE TRUCK-TRACTOR VULCANIZER

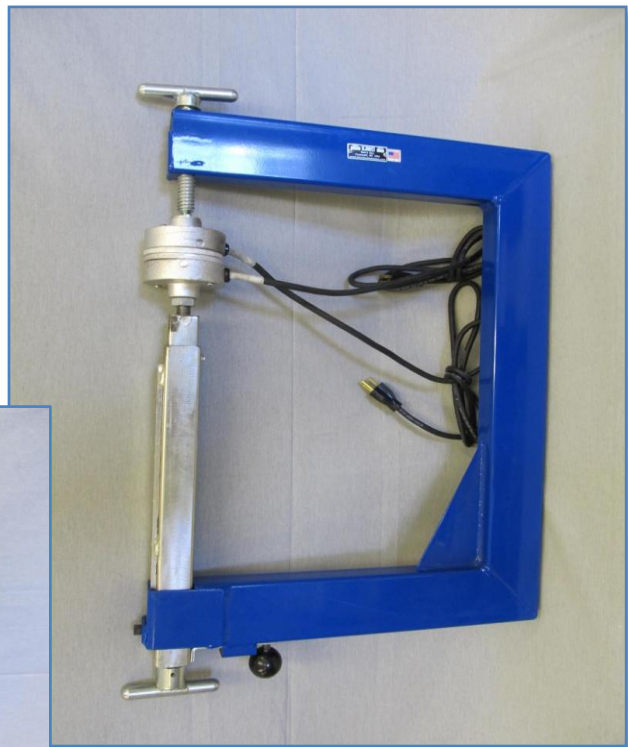
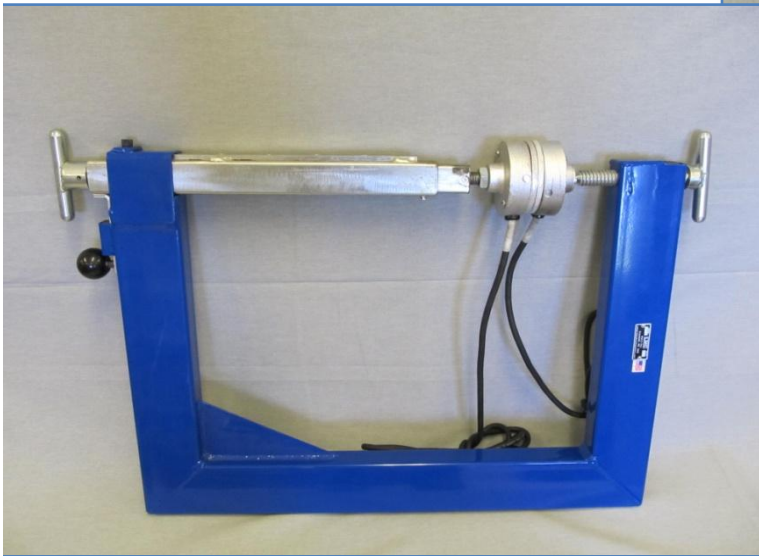
MODEL 1000

ITEM #TO11

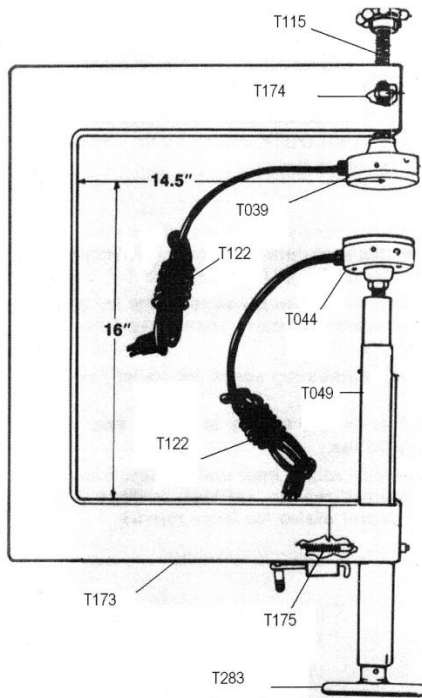
- * Spring loaded lower heat unit maintains even pressure throughout curing process- eliminates frequent re-tightening of heat units.
- * Lower telescoping assembly slides back for quick mounting or removal of spotter, then locks into position for use.
- * Acme threaded adjusting screw for upper heat unit.
- * Solid one-piece frame is easy to handle and weighs only 30 lbs.
- * 3-5/16 diameter round heat units fit into close quarters for small repairs, yet have wattage output to handle adapter plates for large repairs.
- * Model 1000 has capacity to spot and section repair in all truck, tractor and even many off road tires.
- * Available in 120 volt or 240 volt

SPECIFICATIONS

Throat depth	14-1/2 in.
Throat height:	16 in.
Curing heads (2):	3-5/16" diameter
Shipping weight:	30 lb



MODEL 1000 - TO11



PARTS BREAKDOWN

Part No.	Model	Description
T173	1001	Frame for Model 1000
T039	43	Upper swivel heat unit (3-5/16" diameter)
T044	1004	Lower spring loaded heat unit (3-5/16" dia.)
T115	46B	Handwheel adjusting screw (upper)
T174		Nut for part No T115
T049	1007	Telescoping pressure screw assembly (lower)
T175	1008	Compression Spring
T176	1009	Fiber rod
T123		Thermostat for 3" HU
T124		Element for 3" HU
T122		Electrical Cord
T283		Telescoping Handle

OPTIONAL ACCESSORIES

T152		Contour Plate Package contains - 12 (T078, T079, T080, T081, T082, T083, T084, T085, T088, T090, T094, T095) Shipping Wt 13 lb
T078	45	4" Shoulder contour plate
T079	48	4" inside contour plate
T080	49	4" Outside contour plate
T081	55	5" Shoulder contour plate
T082	58A	5" Inside contour plate - flat radius
T083	58	5" Inside contour plate - normal radius
T084	58S	5" Outside contour plate - sharp radius
T085	59	5" Outside contour plate
T088	L1	4" x 5-1/4" Left outside tractor plate
T090	R1	4" x 5-1/4" Right inside tractor plate
T094	P1	4-3/8 x 6-3/8 Flat back-up plate (For use with B-2 (T095) bags, 2 required)
T095	B2	5" x 7" Pliable contour bag (For use with P-1 plates, 2- required)

